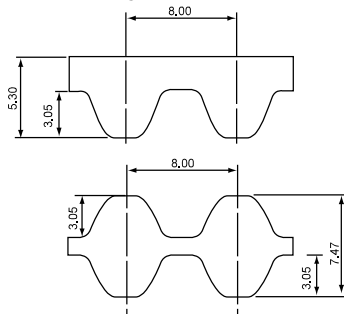


# SUPER TORQUE (D)S8M

G Type (Rubber) only



Standard belt size table

Nominal length	Number of teeth	Pitch length(mm)	Manufacturable Size (G Type)
S8M 376	47	376	S
S8M 400	50	400	S
S8M 408	51	408	S
S8M 440	55	440	S
S8M 480	60	480	S · D
S8M 496	62	496	S · D
S8M 512	64	512	S · D
S8M 520	65	520	S · D
S8M 528	66	528	S · D
S8M 560	70	560	S · D
S8M 584	73	584	S · D
S8M 600	75	600	S · D
S8M 632	79	632	S · D
S8M 640	80	640	S · D
S8M 656	82	656	S · D
S8M 680	85	680	S · D
S8M 712	89	712	S · D
S8M 720	90	720	S · D
S8M 760	95	760	S · D
S8M 800	100	800	S · D
S8M 824	103	824	S · D
S8M 840	105	840	S · D
S8M 848	106	848	S · D
S8M 856	107	856	S · D
S8M 880	110	880	S · D
S8M 896	112	896	S · D
S8M 912	114	912	S · D
S8M 920	115	920	S · D
S8M 928	116	928	S · D
S8M 944	118	944	S · D
S8M 952	119	952	S · D
S8M 960	120	960	S · D
S8M 976	122	976	S · D
S8M 984	123	984	S · D
S8M 1000	125	1000	S · D
S8M 1024	128	1024	S · D
S8M 1040	130	1040	S · D
S8M 1056	132	1056	S · D
S8M 1080	135	1080	S · D
S8M 1120	140	1120	S · D
S8M 1128	141	1128	S · D
S8M 1136	142	1136	S · D
S8M 1152	144	1152	S · D
S8M 1160	145	1160	S · D
S8M 1184	148	1184	S · D
S8M 1200	150	1200	S · D
S8M 1216	152	1216	S · D
S8M 1224	153	1224	S · D
S8M 1248	156	1248	S · D
S8M 1256	157	1256	S · D
S8M 1280	160	1280	S · D
S8M 1296	162	1296	S · D
S8M 1304	163	1304	S · D

● Product Code

**250**

**(D)S8M**

**2000**

**G**

Nominal width (mm) × 10

Tooth Profile (DS8M for Double timing belt)

Nominal length(mm)

G Type (rubber)

Belt width lineup Table 1-42

Nominal width	Width (mm)
150	15
250	25
300	30
400	40
600	60

Belt weight per unit (kg/10mm x 1m) Table 1-43

Material	Tooth Profile	Belt weight
rubber	S8M	0.052
	DS8M	0.060

Table 1-44

Nominal length	Number of teeth	Pitch length(mm)	Manufacturable Size (G Type)
S8M 1312	164	1312	S · D
S8M 1320	165	1320	S · D
S8M 1352	169	1352	S · D
S8M 1360	170	1360	S · D
S8M 1384	173	1384	S · D
S8M 1400	175	1400	S · D
S8M 1424	178	1424	S · D
S8M 1440	180	1440	S · D
S8M 1480	185	1480	S · D
S8M 1488	186	1488	S · D
S8M 1520	190	1520	S · D
S8M 1600	200	1600	S · D
S8M 1640	205	1640	S · D
S8M 1648	206	1648	S · D
S8M 1680	210	1680	S · D
S8M 1696	212	1696	S · D
S8M 1728	216	1728	S · D
S8M 1760	220	1760	S · D
S8M 1776	222	1776	S · D
S8M 1792	224	1792	S · D
S8M 1800	225	1800	S · D
S8M 1816	227	1816	S · D
S8M 1832	229	1832	S · D
S8M 1912	239	1912	S · D
S8M 1960	245	1960	S · D
S8M 2000	250	2000	S · D
S8M 2040	255	2040	S · D
S8M 2048	256	2048	S · D
S8M 2064	258	2064	S · D
S8M 2104	263	2104	S · D
S8M 2120	265	2120	S · D
S8M 2160	270	2160	S · D
S8M 2240	280	2240	S · D
S8M 2272	284	2272	S · D
S8M 2304	288	2304	S · D
S8M 2376	297	2376	S · D
S8M 2400	300	2400	S · D
S8M 2496	312	2496	S · D
S8M 2600	325	2600	S · D
S8M 2800	350	2800	S · D
S8M 2920	365	2920	S · D
S8M 2944	368	2944	S · D
S8M 3048	381	3048	S · D
S8M 3200	400	3200	S · D
S8M 3248	406	3248	S · D
S8M 3272	409	3272	S · D
S8M 3440	430	3440	S · D
S8M 3680	460	3680	S · D
S8M 3720	465	3720	S · D
S8M 3904	488	3904	S · D
S8M 3928	491	3928	S · D
S8M 4400	550	4400	S · D

● S=Single-sided D=Double timing belt

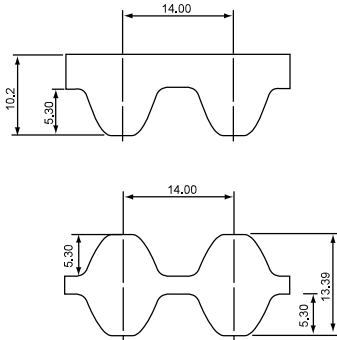
● The design procedure and the defined drive capacity of single-sided timing belts are applied to the equivalent double-sided timing belts.

● Some sizes may not be in stock. Please contact us for the stock status before placing an order.

1  
Properties

# SUPER TORQUE (D)S14M

G Type (Rubber) only



● Product Code

**800**

**(D)S14M**

**3150**

**G**

Nominal width (mm) × 10

Tooth Profile (DS14M for Double timing belt)

Nominal length(mm)

G Type (rubber)

**Belt width lineup** Table 1-45 **Belt weight per unit (kg/10mm x 1m)** Table 1-46

Nominal width	Width (mm)
400	40
600	60
800	80
1000	100
1200	120

Material	Tooth Profile	Belt weight
rubber	S14M	0.100
	DS14M	0.110

Standard belt size table

Table 1-47

Nominal length	Number of teeth	Pitch length(mm)	Manufacturable Size (G Type)
S14M 1008	72	1008	S
S14M 1120	80	1120	S
S14M 1190	85	1190	S
S14M 1246	89	1246	S
S14M 1288	92	1288	S
S14M 1400	100	1400	S · D
S14M 1470	105	1470	S · D
S14M 1540	110	1540	S · D
S14M 1610	115	1610	S · D
S14M 1652	118	1652	S · D
S14M 1708	122	1708	S · D
S14M 1750	125	1750	S · D
S14M 1778	127	1778	S · D
S14M 1806	129	1806	S · D
S14M 1890	135	1890	S · D
S14M 1932	138	1932	S · D
S14M 2002	143	2002	S · D
S14M 2100	150	2100	S · D
S14M 2198	157	2198	S · D
S14M 2240	160	2240	S · D
S14M 2310	165	2310	S · D
S14M 2380	170	2380	S · D
S14M 2450	175	2450	S · D
S14M 2506	179	2506	S · D
S14M 2590	185	2590	S · D
S14M 2660	190	2660	S · D
S14M 2800	200	2800	S · D
S14M 3150	225	3150	S · D
S14M 3360	240	3360	S · D
S14M 3500	250	3500	S · D
S14M 3556	254	3556	S · D
S14M 3850	275	3850	S · D
S14M 4004	286	4004	S · D
S14M 4508	322	4508	S · D
S14M 5012	358	5012	S · D

- S=Single-sided D=Double timing belt
- The design procedure and the defined drive capacity of single-sided timing belts are applied to the equivalent double-sided timing belts.
- Some sizes may not be in stock. Please contact us for the stock status before placing an order.

1  
Properties

